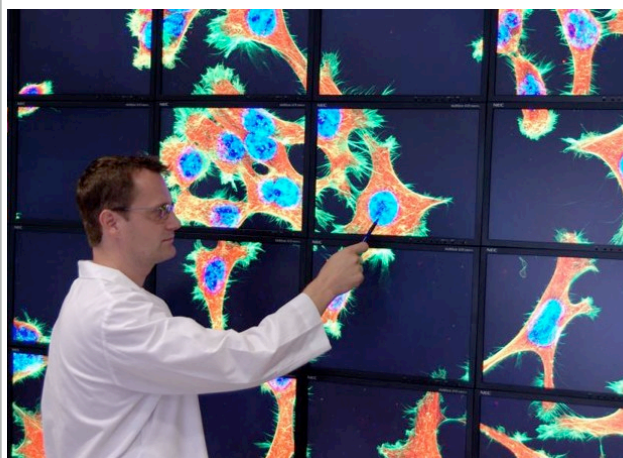


# E-RESEARCH SYMPOSIUM

## FACULTIES OF SCIENCE, ARCHITECTURE & DESIGN, ENGINEERING



### Guest Speaker: Mark Gahegan

Mark is a Professor in the School of Geography, Geology and Environmental Science at the University of Auckland.

His research interests are broad covering most aspects of GIS, visualization, philosophy of science, semantics and pragmatics, analysis, Voronoi diagrams, spatial databases and algorithms and spatial reasoning.



Mark has been involved with GEON, the Geosciences Network for seven years. Mark will talk about the implications of resources such as GEON, SCENZ-Grid and AuScope.

### Guest Speaker: Neil Gemmell

Neil has recently taken up a position as Professor and Director of the Centre for Reproduction and Genomics at the University of Otago, having been Professor of Genetics at the University of Canterbury. Neil's research blends genomics with ecology, population, conservation and evolutionary biology to examine hidden relationships in biology.



Neil has been a contributor to the BeSTGRID project and led the development of the NZ BioPortal.

### Programme

A set of short presentations will set the scene, explain the impact of e-Research and highlight some VUW experience. Demonstrations will be available before and after the presentations.

#### 2:00 Introduction to e-Research

John Hine, VUW

- **e-Research for the Natural and Social Sciences**  
Mark Gahegan, Auckland
- **BeSTGRID Biosciences Initiatives**  
Neil Gemmell, Otago
- **Break**

#### 3:00 Using the Canterbury BlueFern in Nanotechnology Research

Shaun Hendy, IRL & MacDiarmid

- **Grid Computing in Astronomy**  
Denis Sullivan, VUW
- **Expanding Geophysical Data Sets and Computing Requirements**  
John Townend, VUW
- **Design Led Futures**  
Simon Fraser, VUW
- **Sensory Broadcasting and Database Aesthetics**  
Marcia Lyons, VUW
- **Break**

#### 4:40 Q&A -

##### Opportunities and Obstacles

Prof. David Bibby, Pro-Vice Chancellor for Science Architecture and Design, will chair a discussion on the way forward for VUW.

**5:00** The Symposium will conclude with drinks, nibbles, informal discussion and further demonstrations.

**What?** e-Research Symposium

**Who?** Staff and research students in the faculties of Science, Architecture and Design and Engineering

**When?** 11 June 2008, demonstrations from 1:30, Symposium starts at 2pm.

**Where?** Design Multimedia Lab, 4th Floor, Wigan Building, School of Design.

**RSVP?** Please RSVP to Sam.Searle@mcs.vuw.ac.nz, with e-Research in the subject line, by 4 June.

**More info?** <http://www.mcs.vuw.ac.nz/Main/E-Research>

# Victoria

UNIVERSITY OF WELLINGTON

*Te Whare Wānanga  
o te Ūpoko o te Ika a Māui*



